

South Kohala Coastal Partnership

The vision:

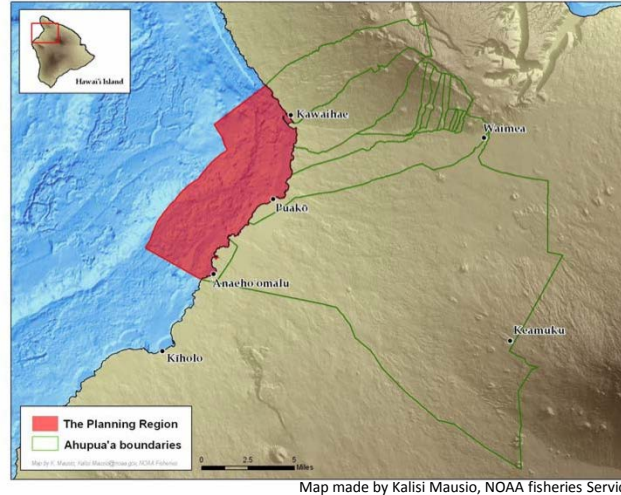
A restored, healthy, abundant, and resilient South Kohala coastal ecosystem cared for and cherished by an island community guided by the values and traditions of South Kohala.

Project area:

South Kohala District, Island of Hawaii

The State's Hawaii Coral Reef Strategy identified coral reef ecosystems along the South Kohala District coastline as a priority management site.

The area of focus includes the marine and coastal habitats along 24 - miles from the north boundary of Kawaihae ahupua'a to the south end of 'Anaeho'omalu Bay.



Progress & planning:

Since 2010 over 70 participants comprised of stakeholders and local experts from over 30 agencies and organizations contributed to the development of the South Kohala - Conservation Action Plan (CAP). The planning process includes ridge-to-reef management strategies, recognizing that the lands in the 15 ahupua'a located upland of the site are ecologically and culturally connected to the coastal waters, and in turn, that the coral reef protects the shoreline. The priority conservation targets and strategies have been identified and the implementation stage is the next phase of the process.

Conservation targets:

- Coastal and Marine Food Resources
- Coastal Wetlands
- Community Kinship and Stewardship
- Coral Reef Ecosystems
- Native Reef Herbivores
- Native Reef Predators

Conservation Strategies:

- Community Partnerships
- Community Co-managed Areas
- Fisheries Management
- Sediment Reduction
- Invasive Species Removal & Prevention
- Additional threat analysis

Contact:

Sierra Tobiason

tobiason@hawaii.edu

www.southkohalacoastalpartnership.com

www.hawaiicoralreefstrategy.com

www.facebook.com/SouthKohalaCoastalPartnership



Current South Kohala Projects funded with NOAAs Coral Reef Conservation Program under awards to Division of Aquatic Resources Nov 2013-Sept. 2014*

Project title	Organization	Project Contacts	Location	Strategies of SKCAP	Identified outcomes
Stream Corridor Assessment	Sustainable Resource Group International	Kristin Duin, Andy Hood	Wai'ula'ula watershed	Sediment Reduction	1. Inventory and Assessment-map 2. Erosion monitoring - plan 3. Riparian zone overlays - GIS maps 4. Report - photo document, erosion plan, prioritize action
Ungulate exclusion and sediment reduction	Kailapa Community Association	Diane Kanealii	Kailapa, Kawaihae	Sediment Reduction	1. Reduce feral goat population 2. Decrease erosion and coastal sedimentation 3. Install and monitor Erosion pins 4. Establish native dry forest seed bank 5. Outreach and publications
Understanding the impacts of land based nutrients on coral reef health	The Nature Conservancy	Eric Conklin, Courtney Couch	Puako and Mauna Lani area	Fisheries Management	1. Identify sites for targeted management along the Puakō- Mauna Lani reef system 2. Test the relationship between coral health and exposure to terrestrial input), generate high resolution (spatial and temporal) temperature and salinity maps of submarine groundwater discharge (SGD) plumes to better track terrestrial input and inform future studies.
Assessment of coral settlement distributions and environmental conditions	UHM HIMB	Drs. Paul Jokiel, Ku'ulei Rodgers, Yuko Stender	South Kohala Priority site	Fisheries Management	1. Evaluation of past, present and future condition of the reef in Pelekane Bay 2. Document changes in the watershed using sedimentation data, historical data, water quality data 3. Continue monitoring and quantify coral settlement 4. Fish and benthic transects 5. Quantify water quality
Integrating Local Ecological Knowledge with a novel scientific tool to refine traditional community based Moon Calendars	UHM	Dr. Friedlander, Eva Schemmel	Kiholo Bay, and Priority Site	Fisheries Management	1. Identify local pono fishing practices, 2. life history and histological data, 3. Spatial and temporal variation in reproductive characteristics, 4. training and technical support to communities
Implementation of South Kohala Conservation Action Plan	UH Sea Grant	Darren Lerner, Sierra Tobiason	South Kohala Priority site	All	Coordinate and staff a locally based working group, 2. Organize and lead local stakeholder engagement related to Phase I implementation of South Kohala Projects, 3. Review and synthesize reports, research materials and study findings to communicate information, 4. Assist with project oversight.

For more information visit www.southkohalacoastalpartnership.com or www.hawaiicoralreefstrategy.com Contact Sierra Tobiason – tobiason@hawaii.edu UH Sea Grant, South Kohala Coastal Partnerships Coordinator Updated 6/24/2014